



NEW! Packaging Lap Splicer

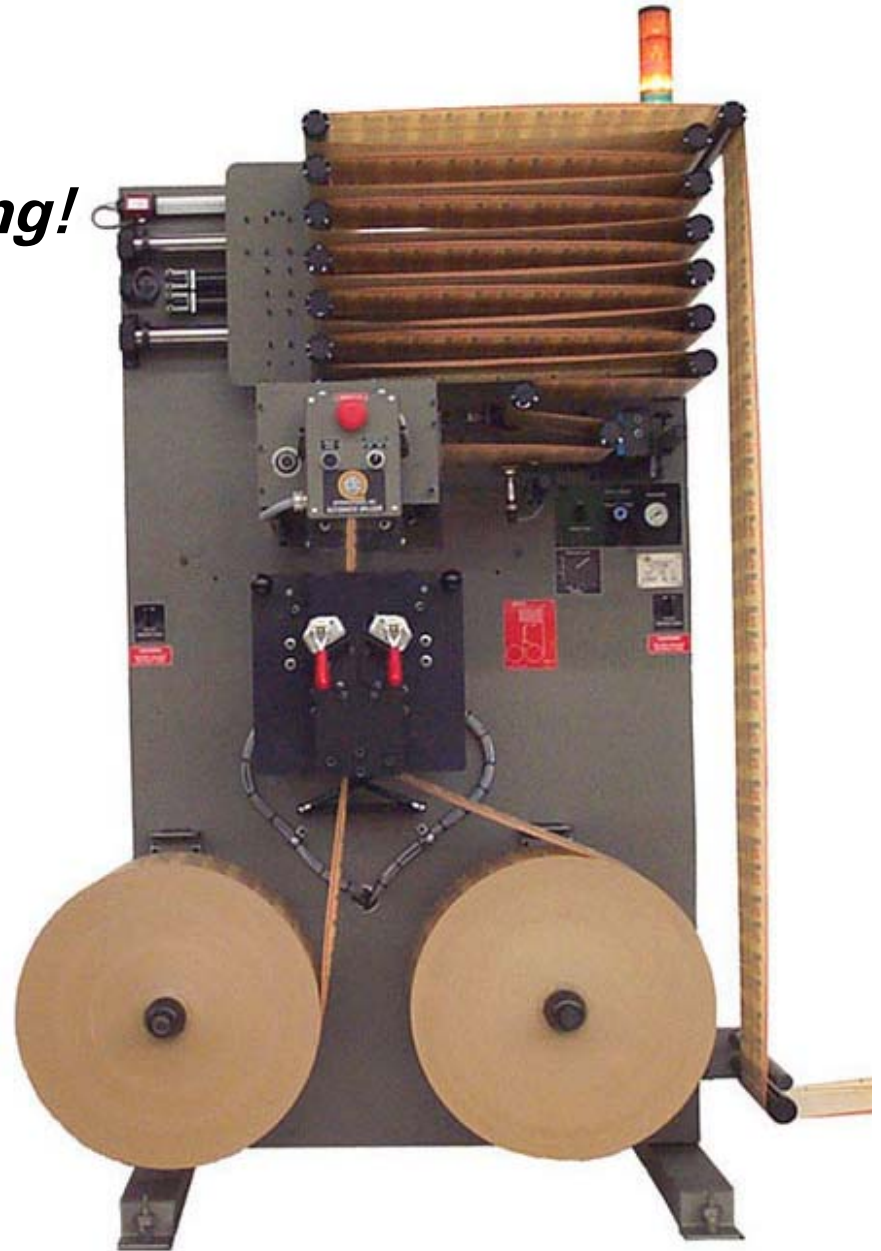
Model CS1224R with Auto Registration

***Keep Those
Packaging Lines Rolling!***

**Saves time, Saves money,
Saves raw material**

Standard Features

- Requires minimal floor space
- Clamshell opening Splice head for Simple loading
- Low Roll Loading Height
- Web prepped horizontally for Splice
- Simple to operate
- Precise tension control standard
- Industry standard PLC control
- Easy thread web festoon
- Lateral adjusting air shafts
- Web break detector
- Accurate registration system
- Web tension adjustable while running
- Minimal power requirements
- Works with a wide range of materials



Horizontal web preparation!

Options

- CE Compliance
- Available in right or left hand configuration
- Other sizes of air shafts
- Splicer available without registration

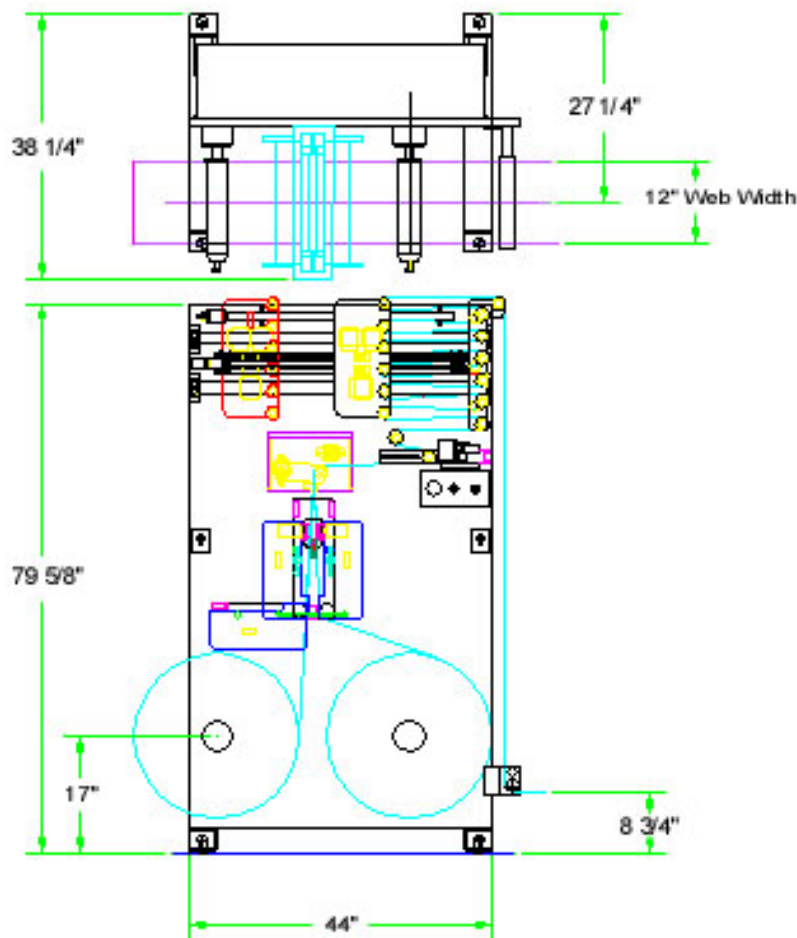


INTERNATIONAL INC.

CTC's CS1224R series are splicers for a new generation. They offer the flexibility, ease of use, reliability and adaptability you need now and into the foreseeable future.

Specifications

- To 330 FPM
- Web widths to 24"
- Roll diameter 24"
- Core diameters: 3"-6"
- 220 volt single phase electrical
- 80 PSI air, negligible consumption



11 York Avenue West Caldwell, NJ 07007
Phone: 973-228-2300 / Fax: 973-228-7076
Email: info@ctcint.com www.ctcint.com